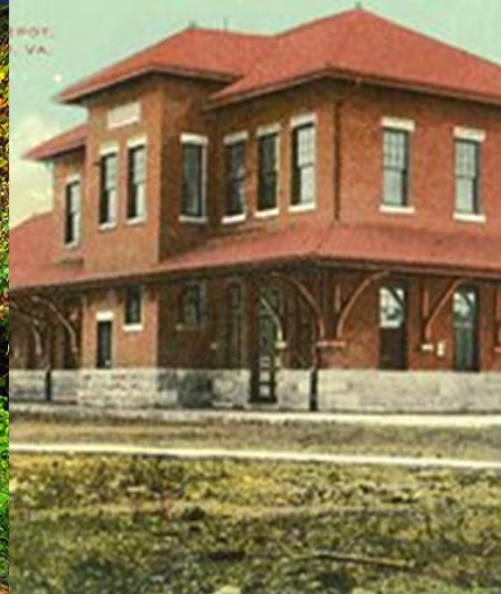




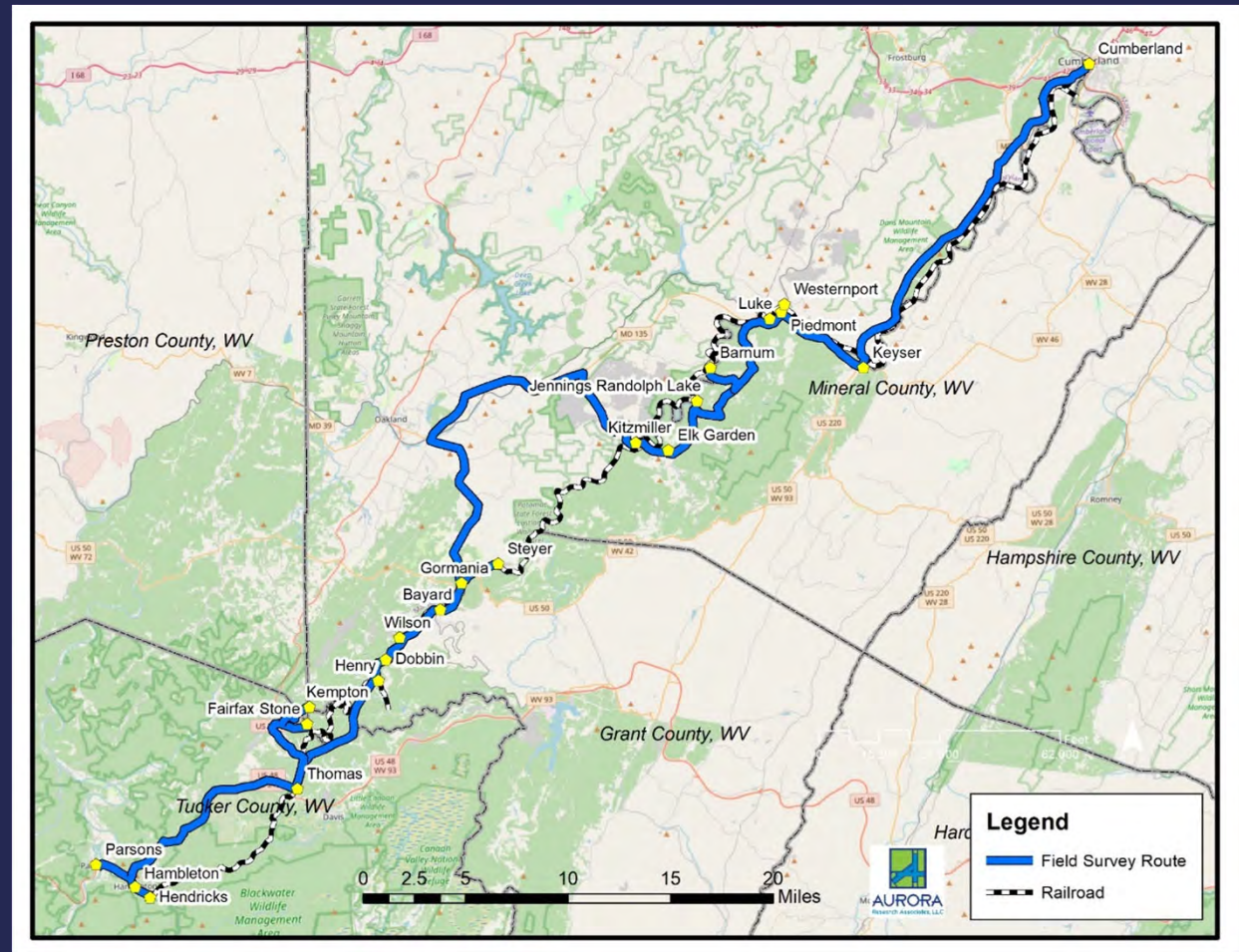
The West Virginia Mountain Railroad National Historic Trail



The WV Mountain RR National Historic Trail

Goals of Project:

1. Compile history of railroad corridor
2. Conduct field survey to identify historic places and other points of interest along railroad
3. Conduct public history events



This project is presented with financial assistance from the West Virginia Humanities Council, a state affiliate of the National Endowment for the Humanities. Any views, findings, conclusions or recommendations do not necessarily represent those of the West Virginia Humanities Council or the National Endowment for the Humanities.



Goals of project



1866

1880

1884

1886-1889

1900

1902-1905

Origin of Railroad

Davis is granted a charter to incorporate Potomac & Piedmont Coal and Railroad Company

New Name, Construction Begins

The railroad was rechartered as West Virginia Central & Pittsburg Railroad. Construction of railroad from Cumberland to Elkins begins

Mines Open

The railroad reaches Thomas. Coal mines owned by the WVC&P open along the road.

Davis Coal & Coke Co. Formed

In 1886, Davis purchases mines and equipment from railway. In 1889, the company reorganizes into the Davis Coal & Coke Co. The railroad reaches Elkins.

Towns Continue to Grow

Rapid growth followed the railroad. Davis, a lumber town, grows from a population of 909 in 1889 to 2,391 in 1900

Consolidation

In 1902, WVC&P RR is purchased by Fuller Syndicate. In 1905, it officially becomes part of the Western Maryland Railroad



West Virginia Central & Pittsburg RR Overview

Garrett/Allegany Counties



Historic Overview:

- Cumberland was an important fort in the French/Indian War (1754-1763) and was the eastern terminus of the national road
- Garrett County is rural and the location of several railroad/coal towns along historic trail

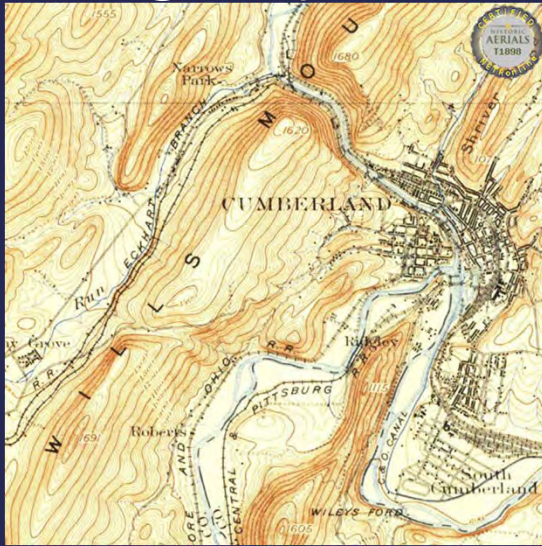


Kitzmiller Flood, 1924



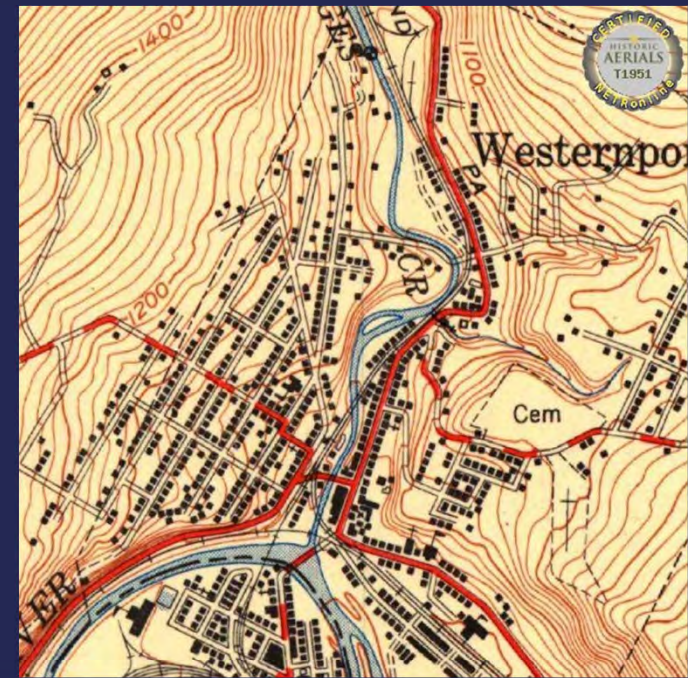
History of Garrett/Allegany Counties

Allegheny County



Cumberland, Allegheny County

Allegheny County

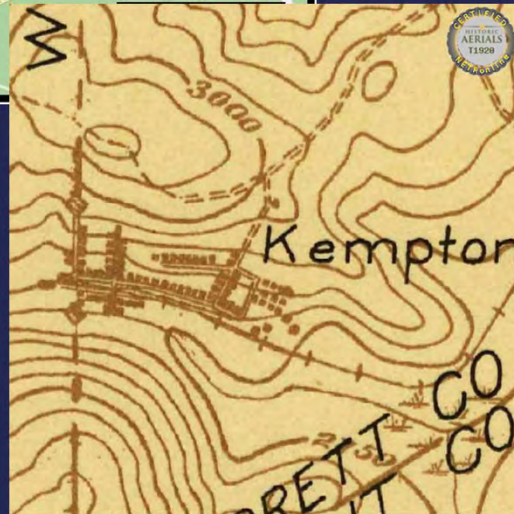
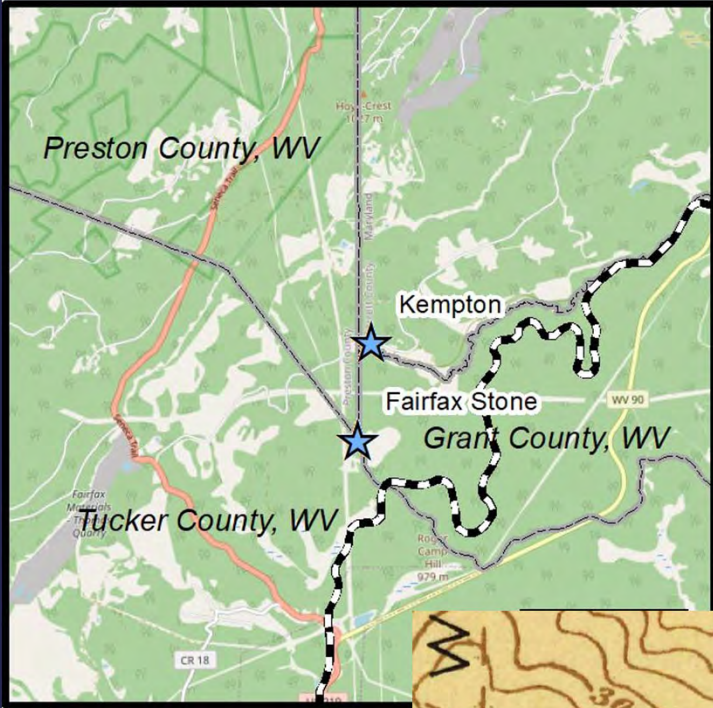


Hammond's Addition Historic District

Westernport, Allegheny County



Garrett County

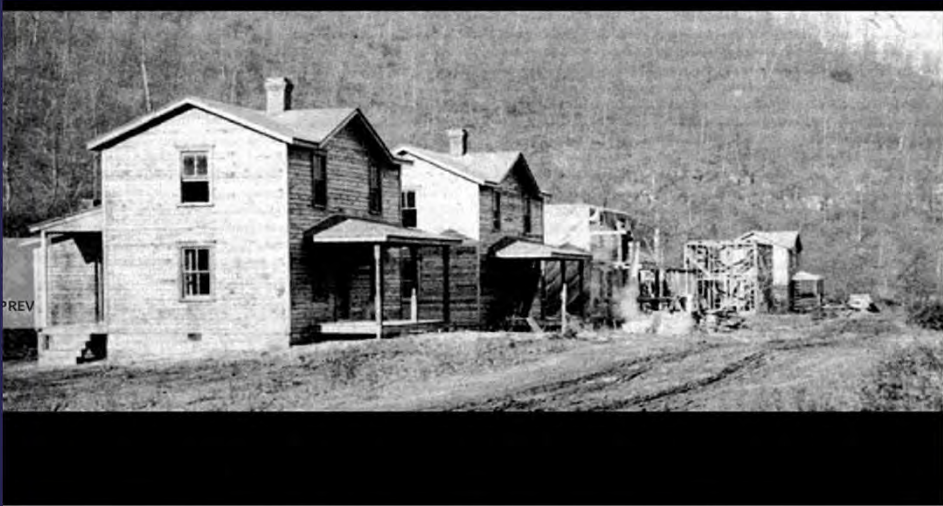


Buxton & Landstreet Co. Warehouse



Kempton, Garrett County

Garrett County



These row houses in Shallmar were built by the Wolf Den Coal Co., which ceased operation in March 1949.
Photo from "Ghost Towns of the Upper Potomac," compiled by Garrett County Historical Society
Cumberland Times-News



The Shallmar Company Store was once the center of activity in the coal mining town, but even it couldn't keep extending credit to the out-of-work miners in 1949.
Photo from "Ghost Towns of the Upper Potomac," compiled by Garrett County Historical Society
Cumberland Times-News



Shallmar, Garrett County

Mineral County



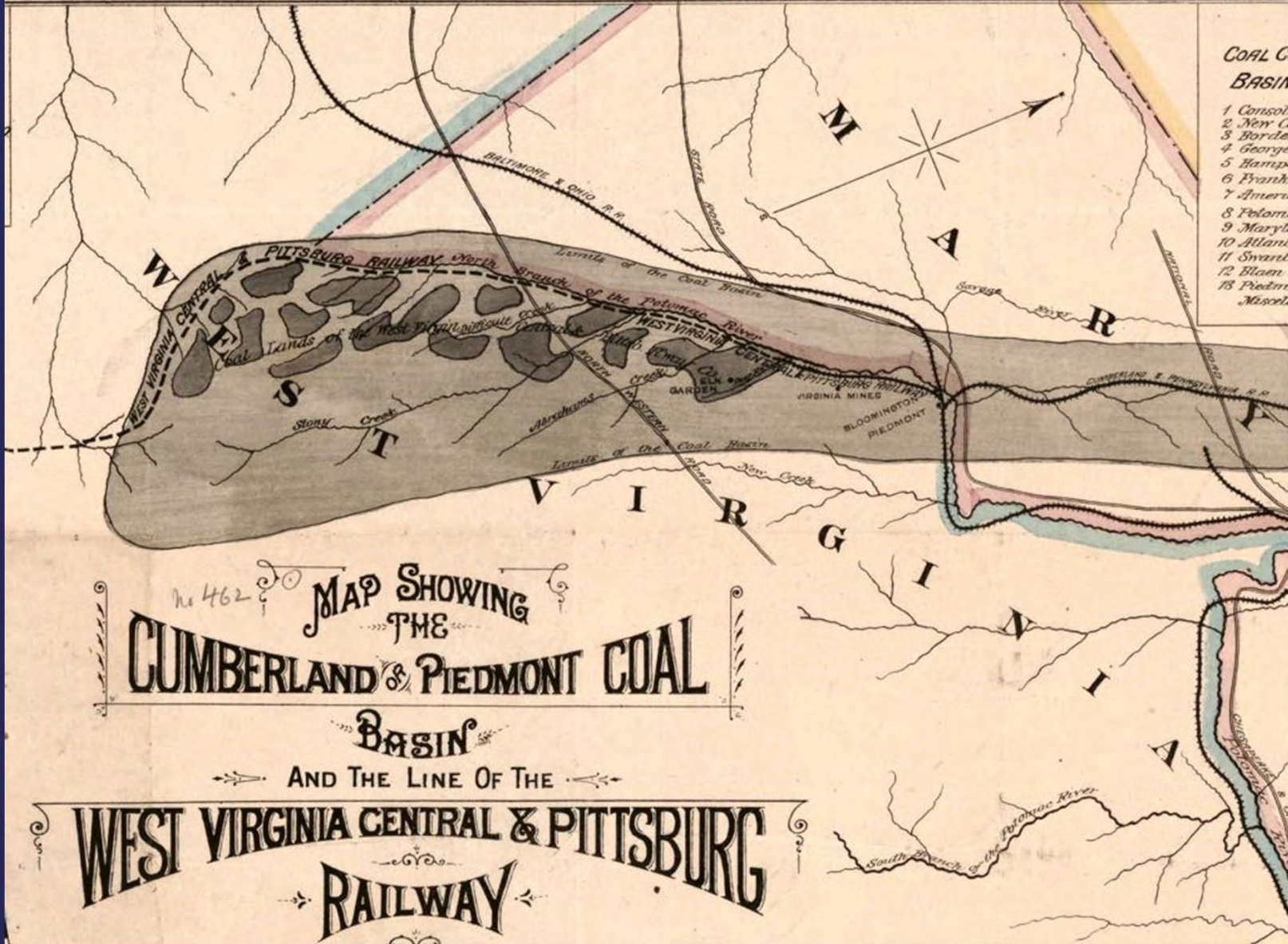
Historic Overview:

- 1700s-early 1800s: agricultural land/hunting ground
- B&O reaches Keyser in 1842 and Piedmont in 1852. Towns begin to grow
- Piedmont becomes rr hub for B&O, C&P, WVC&P RR



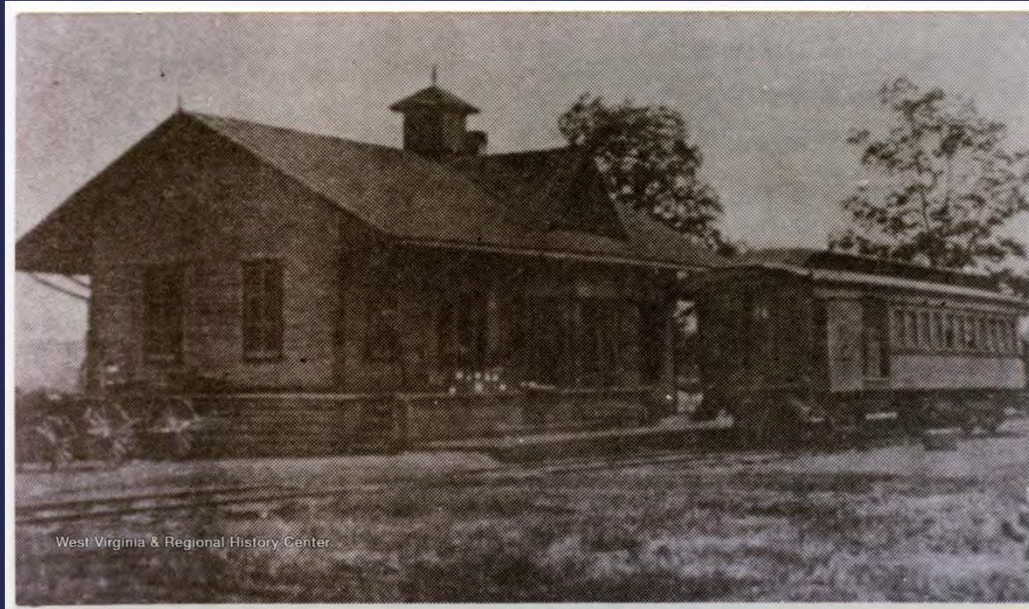
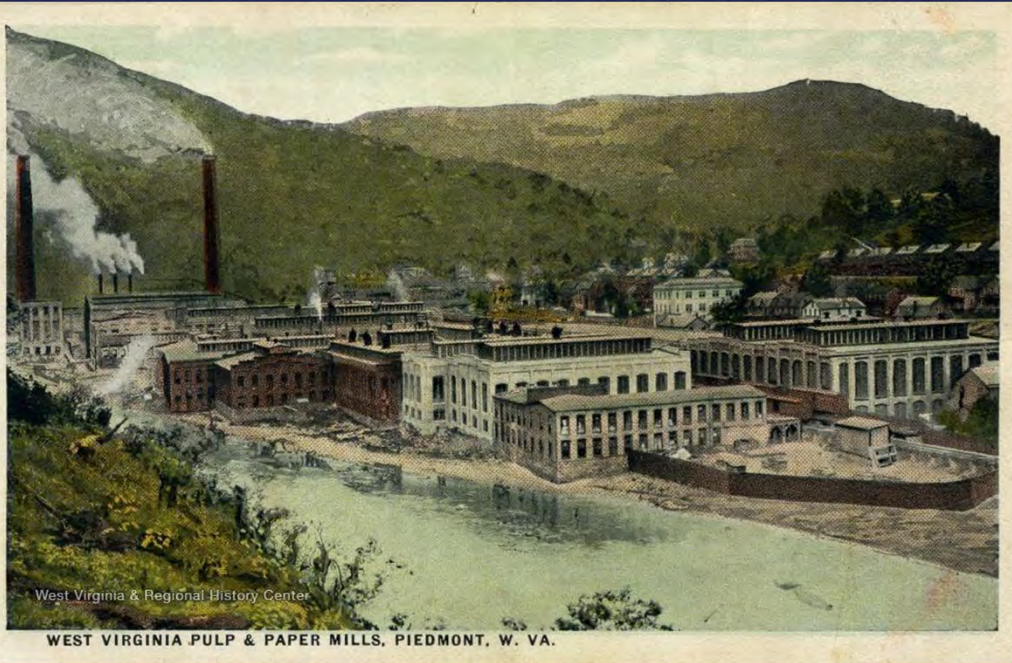
History of Mineral County

Mineral County



Historic Map Showing RR Routes & Coal Basin

Mineral County



Elk Garden Depot



Piedmont



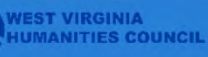
Historic Photos

Baltimore & Ohio Railroad Depot



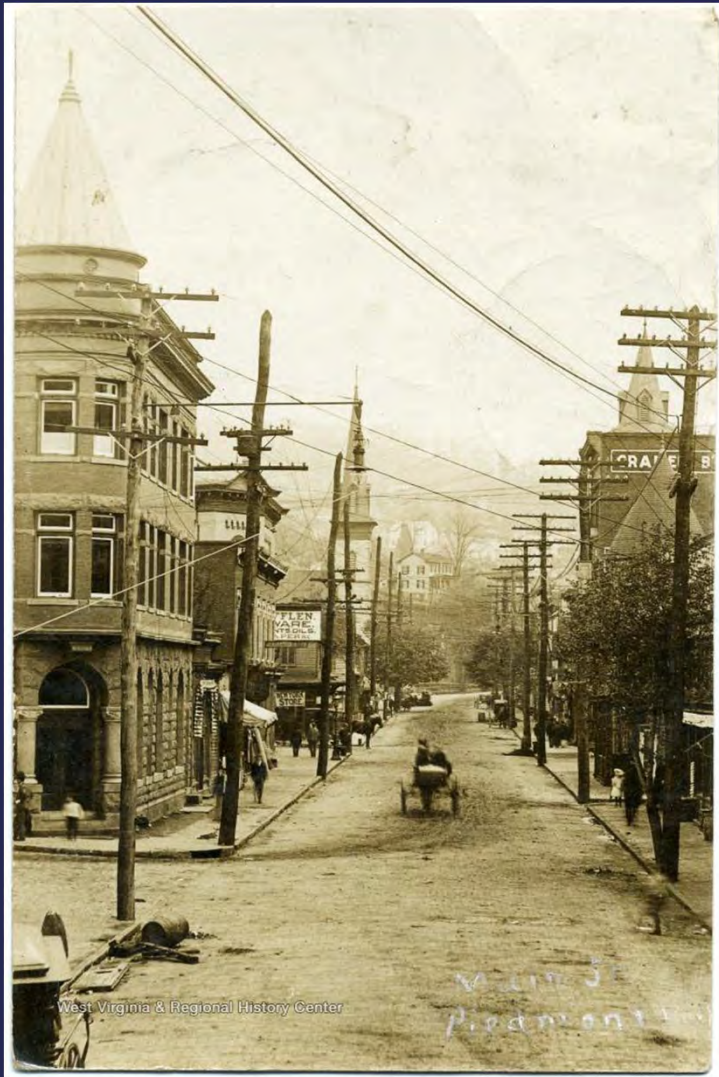
Piedmont, Mineral County

Cumberland & Pennsylvania Depot



Piedmont, Mineral County

First National Bank



Piedmont, Mineral County

Piedmont Grocery Company Wholesale Herald Printing House



Piedmont, Mineral County

Grant County



Historic Overview:

- Rich in agricultural resources, agrarian until WVC&P RR arrives in 1880s
- Bayard, Dobbin, Henry, Gorman, and Wilson pop up on rail line
- Bayard becomes largest town/industrial center of Grant Co.



History of Grant County

Grant County



Hall Building, Bayard



Dobbin Depot



Mabis Ave., Gorman



Historic Photos

Dr. Drinkwater's House



Gorman, Grant County

Knights of Pythias Lodge



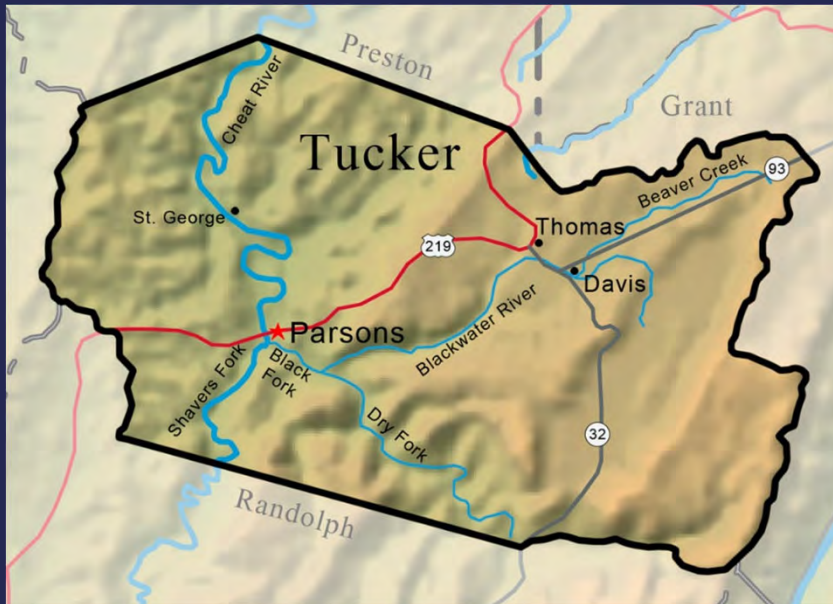
Gorman, Grant County

Emmons Hall



Bayard, Grant County

Tucker County



“The Alleghenies were as rich in coal and timber as the Rockies in precious metals. The heart of the wealth of the Alleghenies is in West Virginia, and its throbbing has just begun with the awakening of its industrial life.”

-Henry Gassaway Davis, Date Unknown



Historic Overview:

- Coal discovered in 1835
- WVC&P RR arrives in 1884 and builds line across county for 5 years
- RR capitalized on existing industries and created new opportunities



History of Tucker County

Tucker County



West Virginia & Regional History Center
Depot, Parsons, W. Va.

Parsons Depot



West Virginia & Regional History Center

Thomas Depot



West Virginia & Regional History Center

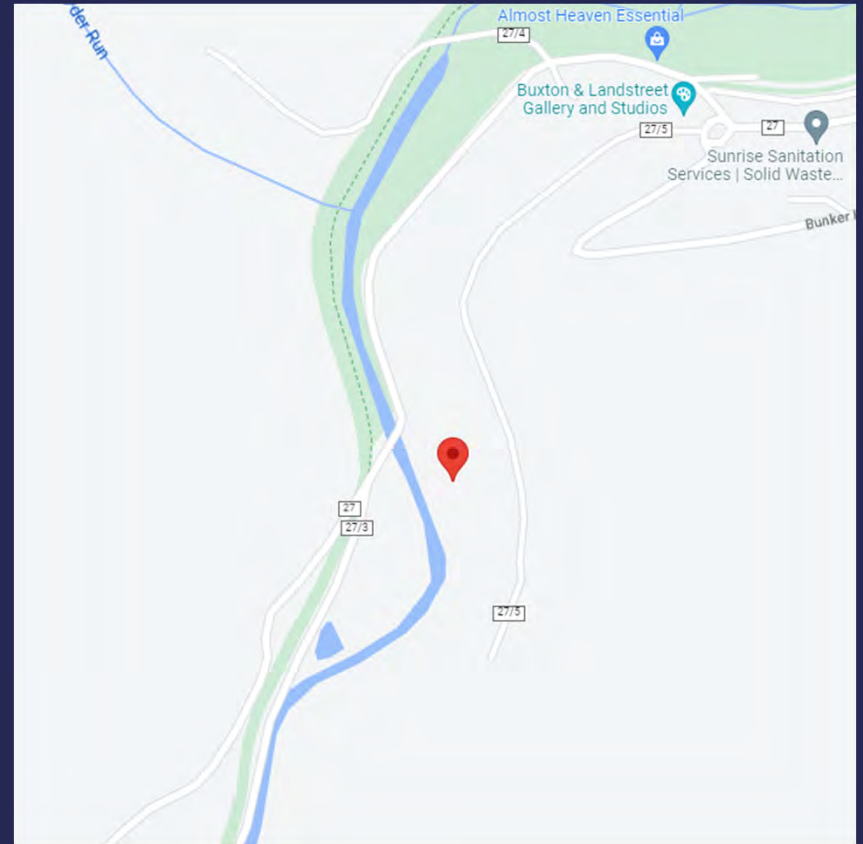
Western Maryland Rail Road Station. Hambleton, W. Va.

Hambleton Depot



Historic Photos

Coketon Colored School



Coketon, Tucker County

Hendricks Swinging Bridge & Jailhouse



Hendricks, Tucker County

Mystery Buildings!



Mountaineer Inn, Bayard



Gormanian



Gormanian

What Do You Know About These Buildings?



Mystery Buildings!



Childs Ave., Piedmont (Campbell Building?)



Gormaniana



Wilson

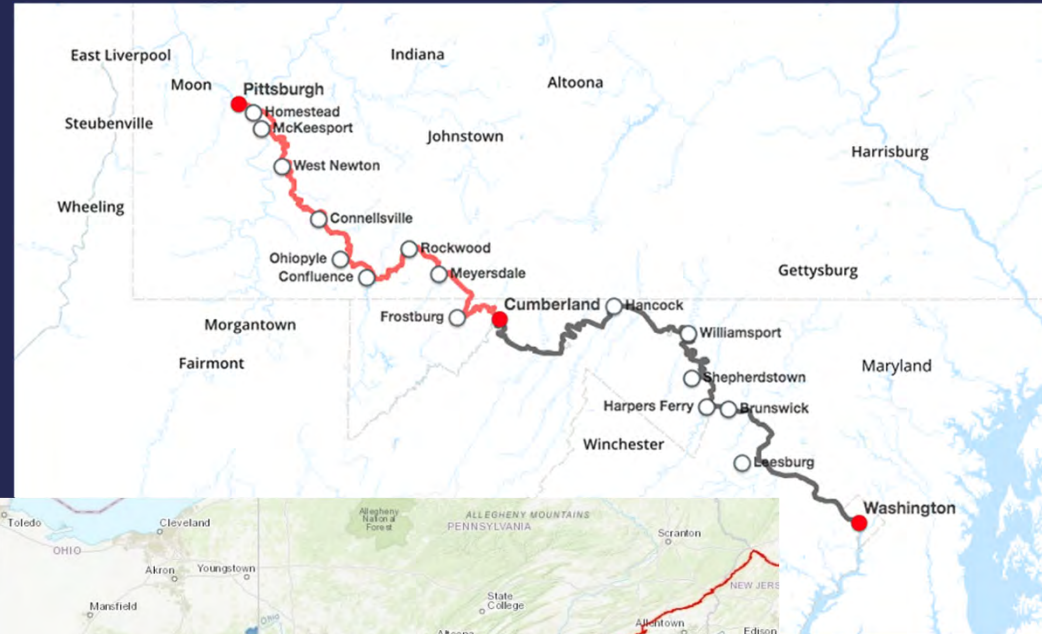
What Do You Know About These Buildings?



The WV Mountain RR National Historic Trail



Proposed WV National Historic Trail



GAP/C&O Trail

Appalachian Trail

A Link to Other Trails



WV Mountain Railroad National Historic Trail

Is a conceptual project that envisions a trail that spans over 100-miles from Thomas, WV to Cumberland, MD. This route follows the North Branch of the Potomac River along the historic West Virginia Central and Pittsburgh Railroad that was created in the late 1800s by Henry Gassaway Davis.

This project began as an idea of Friends of Blackwater. Currently the project is in the beginning stages of a feasibility study being conducted by Civil and Environmental Consultants out of Bridgeport, WV. This project is being funded by an ARC grant.

CEC's involvement is through a partnership that is built with Friends of Blackwater during work on other trail initiatives in Tucker County. This trail is an extension of the Blackwater Loop Trail that is currently being designed that links Thomas to Blackwater Falls and Davis, WV.

What is a National Historic Trail?

National Historic Trails paint a colorful picture of our nation's diverse history. They can follow many different routes and outline many different pieces of history such as:

- Past Routes of Exploration
- Migration
- Struggle
- Trade
- Military Action

National Historic Trails offer an opportunity to re-trace these past events through historic sites, points of interests, trail segments and waterways. There are currently 21 National Historic Trails in the United States totaling over 36,000 miles.



The West Virginia Mountain Railroad National Historic Trail - Thomas, WV to Bayard, WV

Traveling through Tucker, Grant, and Mineral counties, the proposed trail aims to connect Elkins, WV to Cumberland, MD and the GAP trail system.



Kempton Company Store

Found at the historical location of Kempton, MD, this building is testament to the town that housed workers for the Davis Coal & Coke Company's mine number 42.



Project Scope

Bayard
Wilson
Dobbin

Thomas, WV



A town with close ties to the coal industry, Thomas is named after the Davis brothers. In 1883, they opened Davis Coal and Coke. By 1892, it was one of the largest and best known coal companies. Today it provides a unique tourism destination, filled with unique art and local shops. Examples of this are shown below.



Downtown Thomas



Stump Town Ales



The Purple Fiddle



Civil & Environmental Consultants, Inc.

The West Virginia Mountain Railroad National Historic Trail - Bayard, WV to Piedmont, WV

Traveling through Tucker, Grant, and Mineral counties, the proposed trail aims to connect Elkins, WV to Cumberland, MD and the GAP trail system.

Historic Piedmont Train Station



Piedmont, WV
 Located in Mineral County, WV, Piedmont, due to its proximity to surrounding industries, was a strategic location during the building of the B&O Railroad as it pushed west to Wheeling and the Ohio River. The high demand for railroads would result in the construction of a roundhouse and rail yard. In 1888, the West Virginia Paper Company would bring further development to the region. Today, CSX Transportation operates the rail line going through the area.

Gormanias, WV

Founded as a result of the coal mining boom and related industrial activity in the area, Gormanias is an unincorporated community located along the North Branch of the Potomac River. It lies on the Northwestern Turnpike (US 50).



Shallmar Bank

Blaine, WV and Kitzmiller, MD

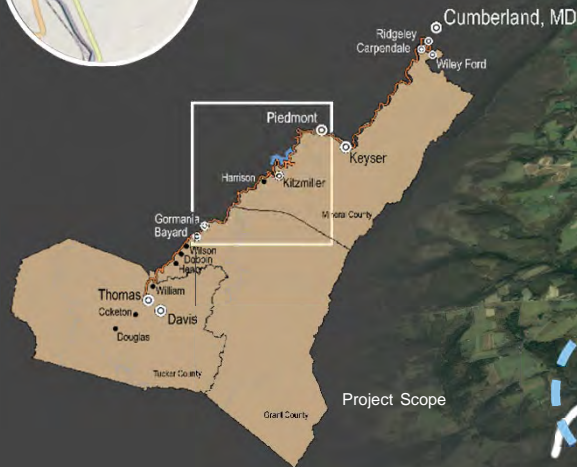
Historically connected to the coal and lumber industries, Blaine and Kitzmiller can be found on the North Branch of the Upper Potomac River. Located along MD Route 32/WV Route 42, these two towns predate the Civil War. However, the greatest growth of the town can be found at the peak of the local coal mining industry.



CSX Train Station at Bayard

Bayard, WV

A small town in Grant County, WV, Bayard was a coal mining community located on the West Virginia Central and Pittsburg Railroad. It formed due to increased industrialization that resulted from the local mining economy.



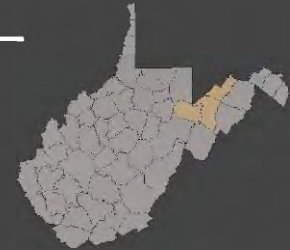
Project Scope



Civil & Environmental Consultants, Inc.

The West Virginia Mountain Railroad National Historic Trail - Keyser, WV to Cumberland, MD

Traveling through Tucker, Grant, and Mineral counties, the proposed trail aims to connect Elkins, WV to Cumberland, MD and the GAP trail system.



Thank you for attending.

We welcome your comments and any additional information regarding the National Historic Trail

Courtney Zimmerman, Aurora Research Associates

courtney@aurora-llc.com

(304) 685-7410

Friends of Blackwater

info@saveblackwater.org

(304) 345-7663

Online Comment Form: <https://tinyurl.com/WVCPRR>



Conclusion